

EVIO Labs Medford (pka Kenevir Research)  
 540 East Vilas Road, Suite F, Central Point, OR 97502  
 541-668-7444 / OLCC 010-1001626980D / www.EVIOLabs.com

## Pain Salve 1000mg CBD

*Amoha Living*  
 Info Only



Confident Cannabis ID: 2003KR0079.1416

Sample ID: M200457-04

Matrix: Topical

METRC Batch #:

Sampling Method/SOP: Client

Date Sampled: NA

Date Accepted: 03/13/20

Harvest/Process Lot ID:

Batch ID:

Batch Size (g):

Unit for Sale:

Harvest/Production Date:

### Cannabinoid Analysis

**FOR INFORMATIONAL USE ONLY - NOT FOR REGULATORY PURPOSES**

Date/Time Extracted: 03/16/20 10:32

Analysis Method/SOP: SOP.T.40.020

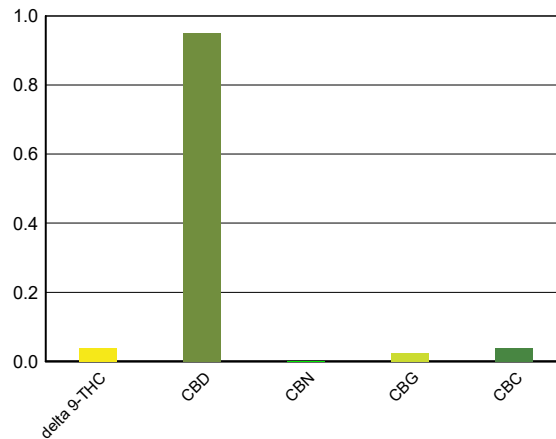
Date/Time Analyzed: 03/16/20 18:50

Sample mass: 98.5g/ mg/unit

Cannabinoids	LOQ(%)	mg/g	mg/unit	Cannabinoid Profile
--------------	--------	------	---------	---------------------

<b>Total THC</b> ((THCA*0.877)+Δ9THC)		<b>0.38</b>	<b>37.4</b>	
<b>Total CBD</b> ((CBDA*0.877)+CBD)		<b>9.52</b>	<b>938</b>	

THCA	0.002	< LOQ	< LOQ
delta 9-THC	0.002	0.38	37.4
delta 8-THC	0.002	< LOQ	< LOQ
THCV	0.002	< LOQ	< LOQ
CBGA	0.002	< LOQ	< LOQ
CBDA	0.002	< LOQ	< LOQ
CBD	0.002	9.52	938
CBDV	0.002	< LOQ	< LOQ
CBN	0.002	< LOQ	< LOQ
CBG	0.002	0.24	23.6
CBC	0.002	0.39	38.4
THCV-A	0.002	< LOQ	< LOQ
CBDV-A	0.002	< LOQ	< LOQ
Sum of tested Cannabinoids	0.002	10.50	1030



"Total THC" and "Total CBD" are calculated values and are an Oregon reporting requirement (OAR 333-064-0100). For Cannabinoid analysis, only delta 9-THC, THCA, CBD, CBDA are ORELAP accredited analytes. Cannabinoid values reported for plant matter are dry weight corrected; Oregon Water Activity action level is 0.65Aw and Oregon Moisture Content action level is 15%. Samples above limit will be highlighted RED; FD = Field Duplicate; LOQ = Limit of Quantitation.

Stephanie Moon  
 Laboratory Director - 3/18/2020

EVIO Labs Medford (pka Kenevir Research)  
 540 East Vilas Road, Suite F, Central Point, OR 97502  
 541-668-7444 / OLCC 010-1001626980D / www.EVIOLabs.com

## Quality Control

**Batch: M20C086 - SOP.T.30.050 Prep for Cannabinoids**

Blank(M20C086-BLK1)			Extracted: 03/16/20 10:32		Analyzed: 03/16/20 16:56		
Analyte	Result	LOQ	Recovery Limits	Analyte	Result	LOQ	Recovery Limits
THCA	< LOQ	0.002 (%)	< LOQ	delta 9-THC	< LOQ	0.002 (%)	< LOQ
delta 8-THC	< LOQ	0.002 (%)	< LOQ	THCV-A	< LOQ	0.002 (%)	< LOQ
THCV	< LOQ	0.002 (%)	< LOQ	CBDA	< LOQ	0.002 (%)	< LOQ
CBD	< LOQ	0.002 (%)	< LOQ	CBDV-A	< LOQ	0.002 (%)	< LOQ
CBDV	< LOQ	0.002 (%)	< LOQ	CBG	< LOQ	0.002 (%)	< LOQ
CBGA	< LOQ	0.002 (%)	< LOQ	CBN	< LOQ	0.002 (%)	< LOQ
CBC	< LOQ	0.002 (%)	< LOQ	Sum of tested Cannabinoid:	< LOQ	0.002 (%)	< LOQ

LCS(M20C086-BS1)			Extracted: 03/16/20 10:32		Analyzed: 03/16/20 17:12		
Analyte	% Recovery	LOQ	Recovery Limits	Analyte	% Recovery	LOQ	Recovery Limits
THCA	103	(%)	70-130	delta 9-THC	98.0	(%)	70-130
CBDA	106	(%)	70-130	CBD	105	(%)	70-130



Stephanie Moon  
 Laboratory Director - 3/18/2020